



2.0
Powered by **AI**

JUST ONE PICK

AcuPick is a true video search engine that can quickly locate the information you need. For a better user experience, AcuPick 2.0—introduced in 2024—offers advanced features encompassing multiple pre-search, multi-type search, intuitive result viewing, and seamless integration with third-party platforms and cameras. This upgrade affords users more speed, more accuracy, more convenience, and more compatibility in search capabilities.



Quickly and Accurately
Locate Target



Rich Search Types



Better Compatibility



Easily Trackable

Development History



Highlight

Quickly and Accurately Locate Target

AcuPick 2.0 supports quick target location through various pre-search by attributes, intrusion with IVS self-learning technology, and image search before using the AcuPick function.

Rich Search Types

AcuPick 2.0 supports several types of search targets, including not only humans and vehicles, but also human faces and animals.

Better Compatibility

AcuPick 2.0 by NVR supports AI, integrates with third-party and Dahua cameras, and reduces thresholds and costs. AcuPick 2.0 also seamlessly integrates with third-party platforms via CGI/SDK, enhancing flexibility and scalability.

Easily Trackable

AcuPick 2.0 supports searching for the movement trajectories of targets on the map and allows batch management of search results.

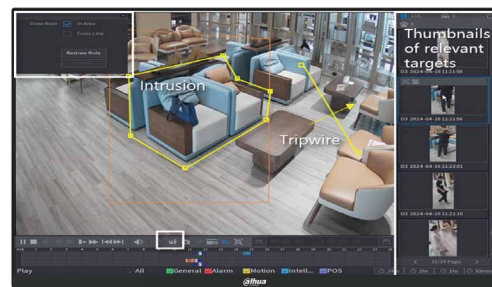
Quickly and Accurately Locate Target

Pre-search by Intrusion or Tripwire

AcuPick 2.0 supports pre-search by intrusion and tripwire. With AcuPick, users can draw an irregular intrusion rule or tripwire to search for video clips in the preview and playback page, helping users to quickly and easily identify the target that entered the area. Users can click on the thumbnails to quickly lock the target and activate AcuPick.



Preview



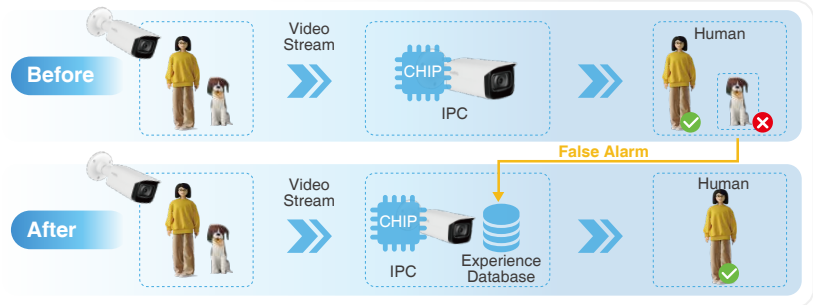
Playback

ACUPICK 2.0

JUST ONE PICK

IVS Self-learning Technology Reduces False Alarms

To enhance the accuracy of pre-search by intrusion or tripwire, AcuPick 2.0 has launched the IVS self-learning technology, which can eliminate common false alarms in the same scenario by manually adding false alarms to the experience database.



Pre-search by Attributes

Before using AcuPick, it is necessary to locate the target. However, in some scenarios, one may not know the exact time and place where the target appears but only know some attributes of the target.

To address this, AcuPick 2.0 now supports pre-search by attributes, which can select attributes according to the known information of the target and search for targets that match the attributes.

** Supported by WizMind S Series IPC and WizMind X Series IPC.*

Top and bottom type and color, bag, hat, gender and umbrella



Human



Vehicle

Vehicle type, vehicle color, vehicle logo, seatbelt, smoking, and calling

Rich Search Types

Newly Supports Animal Search

AcuPick 2.0 supports target searches for humans, vehicles, and animals. Its precise detection and tracking capabilities make it an ideal choice for enhanced security and surveillance, catering to a wide range of applications.

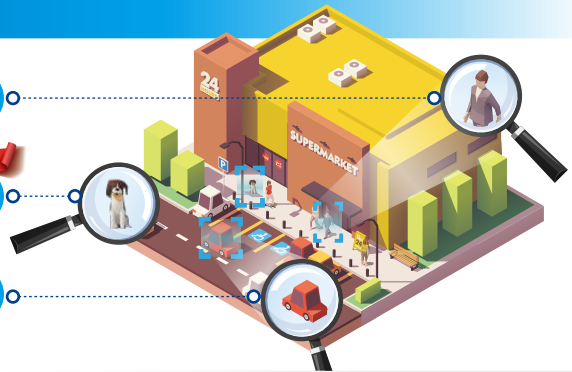
Human Search



Animal Search



Vehicle Search



Search with Face Recognition

AcuPick 2.0 can be simultaneously enabled with face recognition on NVR5-XI or NVR6-XI. When both functions are active, individuals exhibiting suspicious behavior can be identified and tracked. If such a person re-enters the premises, the system accurately alerts security personnel using face recognition, enhancing safety and security efficiently.



Enable Face Recognition

** AcuPick is enabled by default.
Users don't need to configure it.*



Show detected human targets or faces



Pick human target

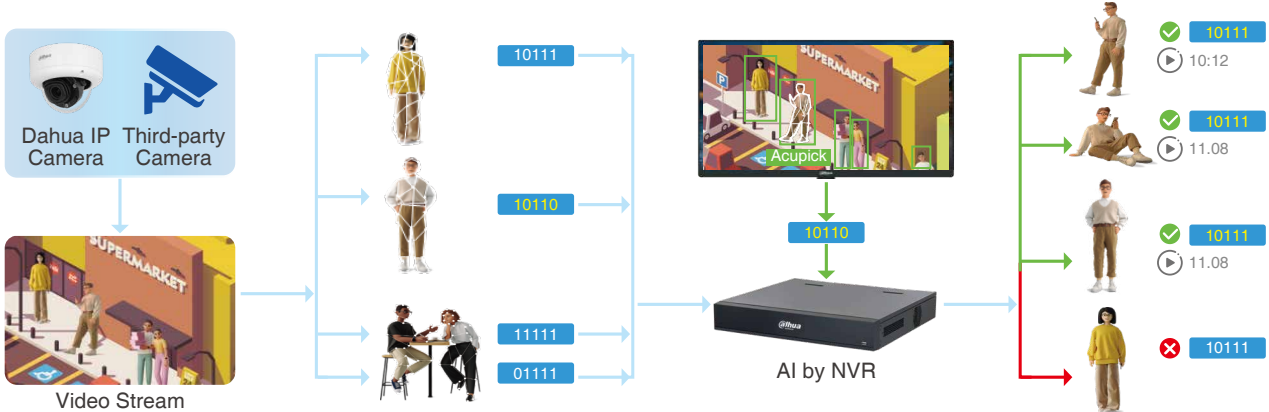


Pick human face

Better Compatibility

AcuPick by NVR

AcuPick 2.0 supports AI by NVR, making it compatible with third-party cameras and Dahua general cameras. Not only can it lower the threshold for use, but it can also help reduce construction costs.



Compatible with Third-party Platforms

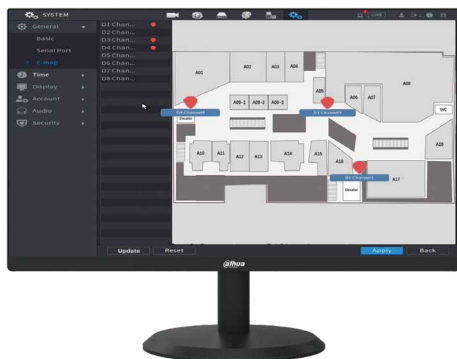
The AcuPick 2.0 function can seamlessly and deeply integrate with various third-party platforms by supporting open CGI/SDK. The compatibility upgrade significantly enhances the flexibility and scalability of AcuPick, enabling it to fit broader application scenarios.



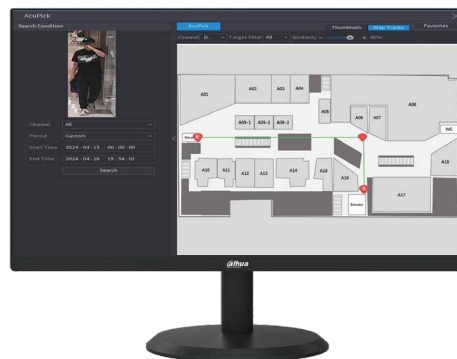
Easily Trackable

Target Track Query

With AcuPick 2.0, users can review the trajectory of the target they are searching for on the map, enabling them to quickly locate and identify the target in time.



Users can upload maps and move cameras to its locations



When using AcuPick, a trajectory map of the target can be generated on the map

Typical Scenarios

Loss of Property

Property safety is particularly important in daily life. When a property is lost, it is necessary to quickly investigate the situation, define the scope of damage, and quickly recover the lost property. The Pre-search by Intrusion function can help find the video of the lost property immediately.



Seek the Robber

In a narrow passageway with sparse foot traffic, personal safety and property safety are difficult to ensure. It is important to quickly monitor the area and be aware of potential danger. The Pre-search by Attributes function can help locate the target quickly. Through Target Track Query, we can immediately find the location of the target, preventing any further harm or loss.



Pet Monitoring

Pets jump up and down and run around aimlessly in every corner of the house while the pet owner is not at home. With this solution, pet owners can know where their pets are when they are not at home. Users can also save the daily videos of their pets for later viewing.



Product Selection



WizSense 3 Series
WizSense 3 TiOC S5/PRO Series
WizSense 3X49-IL Series
(Will be released in Aug.)

Supports AcuPick (enabled by default)

- Smart Dual Light: Freely switch illumination mode
- SMD 4.0, Perimeter Protection focus on human and vehicle
- AI SSA: Adopt deep learning algorithms to adjust the parameters of the image to suit the conditions
- AI Coding ABR: ABR (Average Bit Rate) coding strategy for better image quality and save bandwidth



WizMind S Series
WizMind 5 (S2) Full-color Series
IPC 5842/5541/5442/5241(-Z) (S3)
IPC-5X49-LED (S2)

Supports AcuPick (enabled by default)

- Enhanced image effect with AI-ISP (WizMind S Series)
- Supports AcuPick with attributes (WizMind S Series)
- Perimeter Protection self-learning further reduces false alarms (WizMind S Series)
- Perimeter Protection focus on human, vehicle and animal (WizMind S Series)
- Rich AI functions, Video Metadata, Perimeter Protection, People Counting, Face Detection, Heat Map, etc.
- Dual power backup(except box cameras), Plastic-free package
- P-iris, Anti corrosion, Dual Mic, Heater

Product Selection



WizMind X Series

Supports AcuPick function with attributes

- Enhanced image effect with AI-ISP
- Perimeter Protection self-learning further reduces false alarms
- Perimeter Protection focus on human, vehicle and animal
- AI Function: Supports face recognition, face detection, IVS, people counting, video metadata, PPE Detection, parking space management and ANPR, etc.
- IP67 and IK10 protection. Anti-Corrosion coating(optional).
- Dome: Built-in dual MICs; 1-ch speaker; supports two-way talk. Supports Sound Management.



SD6C/5/4-G Series

* 8MP models do not support AcuPick

Supports AcuPick (enabled by default)

- Perimeter Protection self-learning further reduces false alarms
- Perimeter Protection focus on human, vehicle and animal
- AI Function: Video Metadata (SD6C/5-G Series), Face Detection, SMD 4.0, Perimeter Protection
- Auto Tracking 3.0 (SD6C/5/4E), Auto Patrol , PFA 3.0
- Built-in speaker, red & blue alarm lights (SD6C3/4E)
- 45/32/25x optical zoom



NVR5-EI Series

Supports up to 32-channel AcuPick (with AcuPick IPC/PTZ)

- 32ch@1080P decoding capacity
- Max. 384Mbps incoming/recording/outgoing bandwidth
- 2-channel Face Detection and Recognition, 4-channel Perimeter Protection, 8-channel SMD Plus



NVR5-XI Series

Supports up to 36-channel AcuPick (with AcuPick IPC/PTZ)

Supports AcuPick by NVR

- 32ch@1080P decoding capacity
- Max. 512Mbps incoming/recording/outgoing bandwidth
- 8-channel Face Detection and Recognition, 8-channel Video Metadata, 24-channel Perimeter Protection, 32-channel SMD Plus



NVR6-XI Series

Supports up to 64-channel AcuPick (with AcuPick IPC/PTZ)

Supports AcuPick by NVR

- 32ch@1080P decoding capacity
- Max. 1280/1280/1024Mbps incoming/recording/outgoing bandwidth
- 8-channel Face Detection and Recognition, 8-channel Video Metadata, 32-channel Perimeter Protection, 32-channel SMD Plus

